



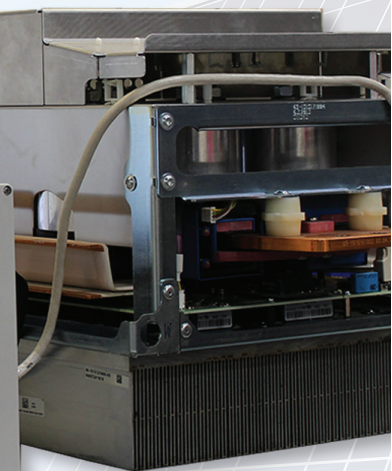
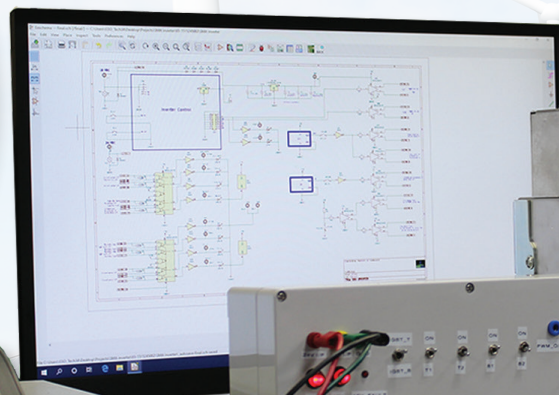
The Leader in
RENEWABLE ELECTRONIC SERVICES

Providing Quality Repairs with **EXCEPTIONAL CUSTOMER SERVICE SINCE 1913.**

For more than 100 years, TEAMSESCO has set the standard in the electronic repair industry. Creating schematics and accumulating repair data for thousands of brands on more than 150,000 unique part numbers has given us a unique advantage within the industry. With a vast library of schematics and diagrams of various renewable components, we continue to set ourselves apart from the competition.



SMA TEST FIXTURE

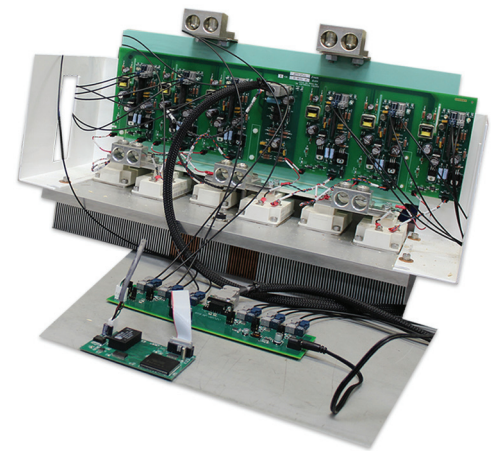


Today, more renewable companies rely on TEAMSESCO for their electronic repair solutions than ever before. We continue to expand our capabilities through our engineering team and grow our business by offering the very best.... the best technicians, the best test equipment, and the best procedures. Our leadership role in renewable electronic repair has been achieved by partnering with our customers, identifying their current and future needs, staying on the forefront of technology, and utilizing state of the art test equipment, such as our industry exclusive closed loop, hydraulic load center.



GET FULL RATED LOAD AND COMMUNICATION TESTING WITH TEAMSESCO'S QUALITY REPAIRS

TEAMSESCO knows the only way to ensure the quality of any repair is to fully understand the units internal workings, to have the ability to run the unit at full rated load capacity, and to test and control its communication functions. Our engineering team spends the time needed to reverse engineer every renewable component we repair, to create schematics, to identify high failure rate components, and to find and resolve OEM design flaws. Most importantly, we create written repair and load test procedures. When possible, we run and test all repaired units under full-rated load capacity. Our custom-built load center is fully adjustable direct from the technician's workbenches where it can run indefinitely or for any variable amount of time to be certain that the unit will sustain its full rated load capacity.



SCHNEIDER/XANTREX TESTING

QUALITY REPAIRS DON'T HAPPEN BY ACCIDENT

STEP 1

Your electronic equipment is immediately identified, tagged, and given a barcode that is used for tracking within our facility.

STEP 2

The repair is cleaned to remove contaminants.

STEP 3

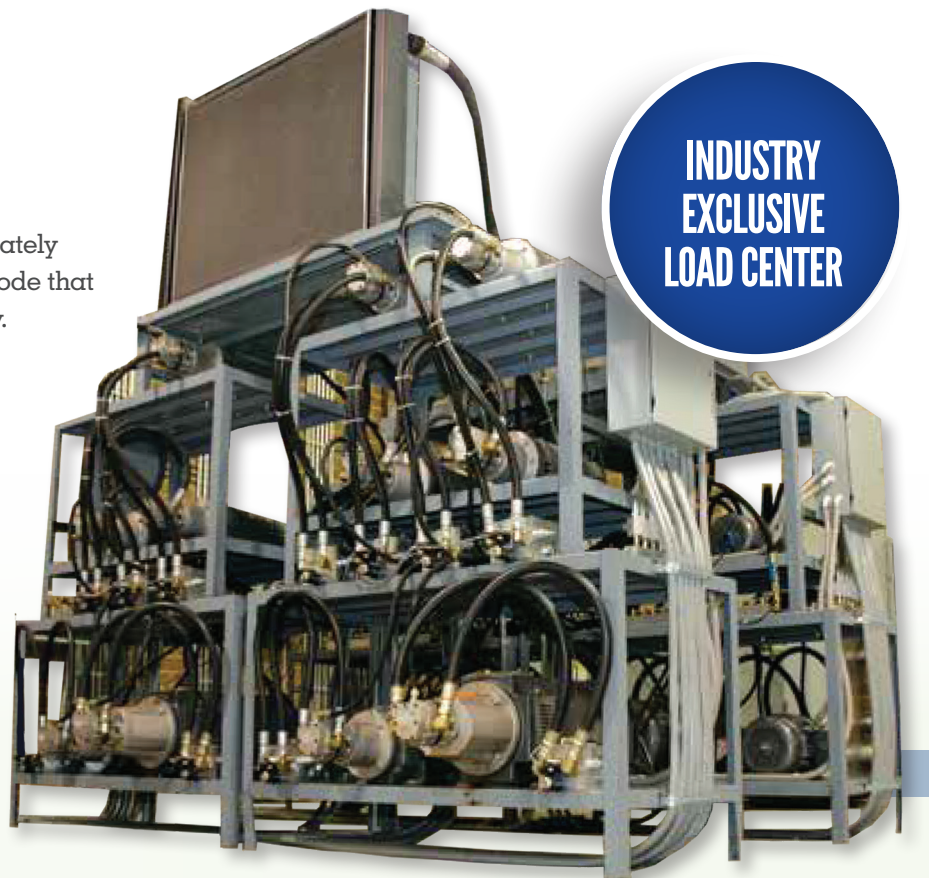
Our highly trained and experienced technicians evaluate your repair and begin the repair process which includes the following:

- Visual inspection for damaged or failed components
- Both static and dynamic testing on all components
- Inspection and testing of all traces, wiring, and connections
- Replacing all high failure rate components regardless of condition
- Replacing failed components using higher lifetime and temperature rated components
- Lastly, the repair is tested under load conditions using our industry exclusive test fixtures

STEP 4

Once the repair passes our rigorous quality control process, it is tagged with warranty tracking barcodes and carefully packaged in anti-static/shock resistant packaging and shipped per the customers preferred method.

**INDUSTRY
EXCLUSIVE
LOAD CENTER**



TEAMSESCO
THE CLEANPOWER REPAIR ADVANTAGE®

TEAMSESCO

THE **CLEANPOWER** REPAIR SPECIALIST™

ADVANCED ENERGY COLDPLATE

The Advanced Energy AE1000NX coldplate module testing solution verifies the integrity of the driver circuitry, snubber, and the complete power section. The module runs with proprietary TEAMSESCO software providing gate drive signals to all associated circuitry within the unit. Using the existing 3-LE NEUTRAL POINT CLAMPED (NPC) INVERTER technology, the high voltage DC bus is driven to the output while monitoring feedback variables to verify correct operation and a reliable repair.

QUESTIONS?
CALL US AT
1-800-48-SESCO
TODAY!

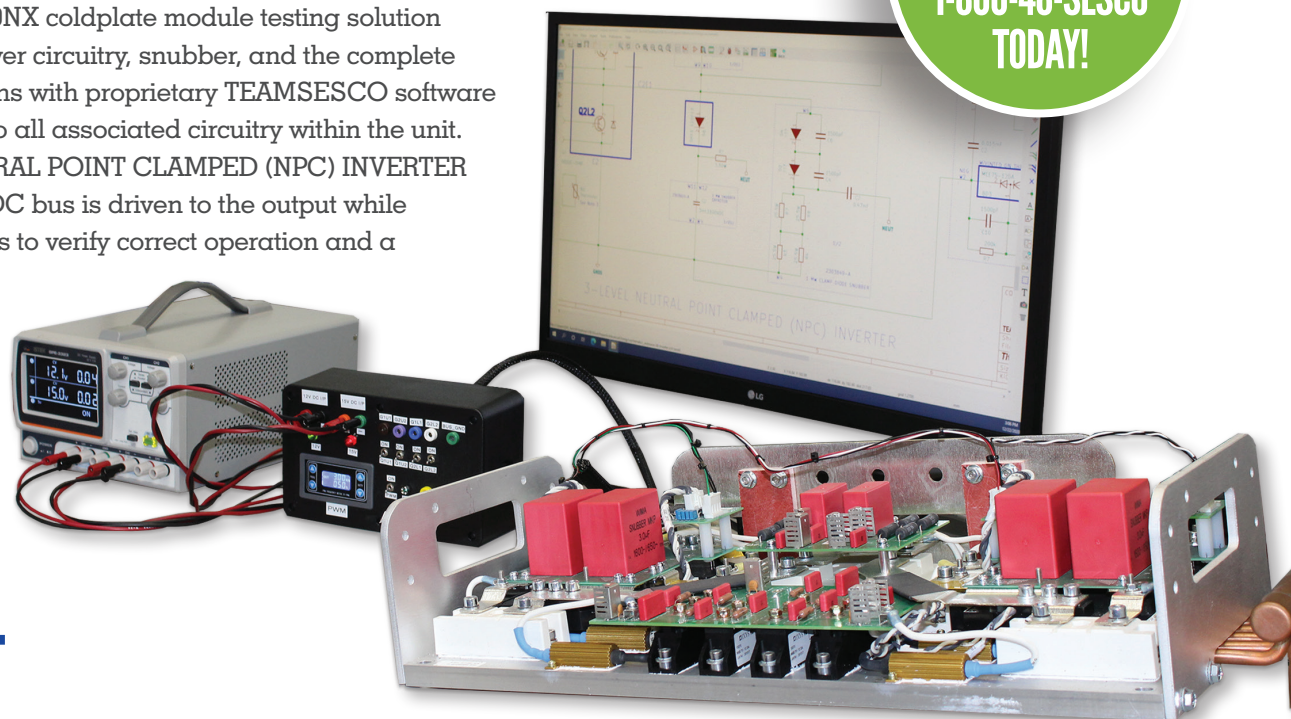
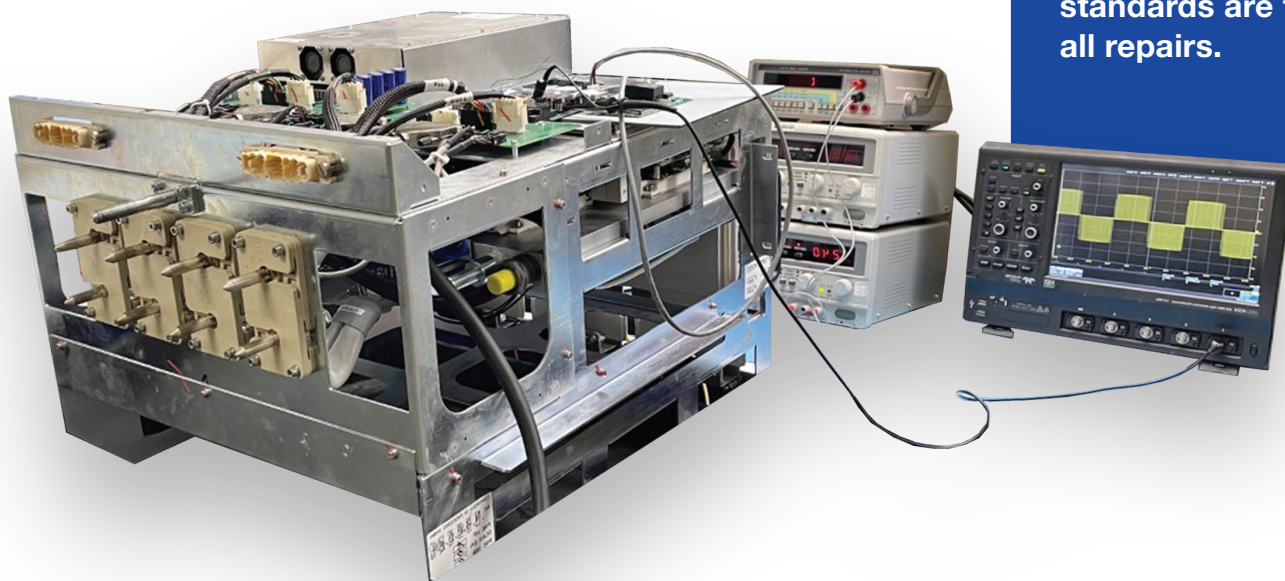


ABB ULTRA IGBT

TEAMSESCO's new ABB Ultra grid simulator test stand provides a comprehensive testing solution for high power ANPC inverters. A reliable repair is ensured by using proprietary TEAMSESCO hardware and software to control, monitor, and verify compliance to design specifications. After preliminary testing and repair, the unit is load tested under a high current inductive load to verify proper operation. The boost sections duty cycle control and output voltage is monitored and verified to be in regulation.

The ANPC inverter section output voltage and current waveforms are tracked and confirmed to match feedback and control values. The unit is then run until the heatsink reaches thermal equilibrium to certify efficient operation and a robust repair.

**TEAMSESCO'S GOAL IS
100% CUSTOMER SATISFACTION.**
Our process delivers
quality repairs quickly and
consistently. No matter the
product, part, or size of
the job, the same quality
standards are followed on
all repairs.





Providing
QUALITY REPAIR SERVICES
since **1913**.

Our commitment to unsurpassed service, skilled repairs and fast turnaround are just a few of the reasons why more clean energy companies are choosing TEAMSESCO for their critical repairs than ever before! Here are just a few advantages of choosing TEAMSESCO for your repairs:



— TEAMSESCO —
STARSERVICE
GUARANTEED REPAIRS

- Each repair is backed by our exclusive **StarService Guarantee**.
- Each repair is tracked with TEAMSESCO's state-of-the-art barcode system.
- TEAMSESCO's proprietary equipment duplicates and tests each repair as part of a total system.
- Our vast library of schematics and test documentation, plus an inventory of over one million industrial electronic parts.

For fast, reliable repairs at a fraction of the cost of OEM solutions, turn to the experts at TEAMSESCO!

Ship your repairs to:

TEAMSESCO

7101 Cessna Drive, Greensboro, NC 27409

Call us today at **1-800-48-SESCO**

or visit us online at www.teamseesco.com

FULL REPAIR & TESTING FOR TRACKING SYSTEMS



TEAMSESCO provides quality repairs on all brands of power electronic equipment. Every repair is backed by our exclusive StarService warranty and tracked using our state-of-the-art barcode tracking system. Before any repair ships, it undergoes complete comprehensive testing based on the original design specifications. We utilize infinitely variable semiconductor load testing for applicable repairs, insuring that your repaired unit works in the field as well as it did in our facility. This level of testing is critical to TEAMSESCO's overall quality control and reliability guarantee.



THE **CLEANPOWER** REPAIR SPECIALIST™

7101 Cessna Drive, Greensboro, NC 27409 | Call us at 1-800-48-SESCO or visit us online at www.teamseesco.com